

HYDRAULIC CHAIN CUTTERS



- ✓ Maximum working pressure 700 bar.
- ✓ CK0016 model includes an integral built-in hand pump.
Other models are powered by an external hand, air, electric, or petrol pump.
- ✓ CK0216, CK0230 and CK0250 models are double acting, for fast retraction.
- ✓ CK0116 and CK0216 are not equipped with handle.
- ✓ All models are provided with a male ball quick coupler AZ3321.
- ✓ Available battery powered portable pump HAB1102.

HAB1102
Battery Powered Portable Hydraulic Pump



P.101

Z12107
Air Hydraulic Pump



P.86

HBM
Manual Powerpack



P.88



Performance under Pressure

HYDRAULIC CHAIN CUTTERS



Type **CK**

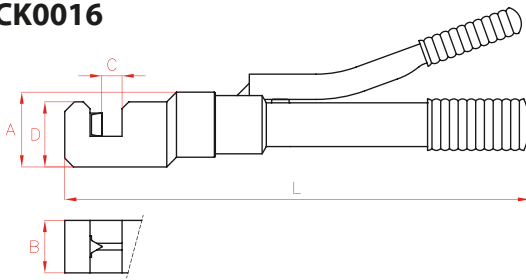
Capacity **13 - 112 Tn**

Chain **max. 50 mm**

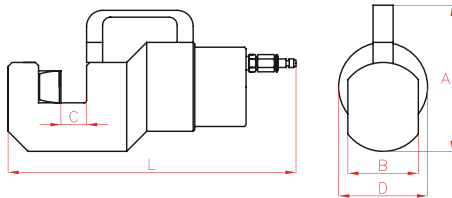
Max. pressure **700 bar**

Model	Replacement Blades	
	Mobile	Fixed
CK0016	CRK16/1	CRK16/2
CK0116	CRK16/1	CRK16/2
CK0130	CRK30/1	CRK30/2
CK0216	CRK16/1	CRK16/2
CK0230	CRK30/1	CRK30/2
CK0250	CRK50/1	CRK50/2

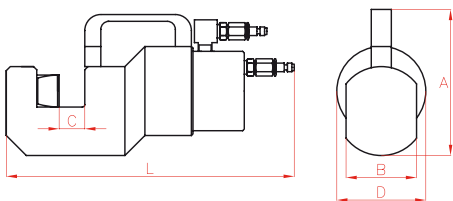
CK0016



CK0116 - CK0130



CK0216 - CK0230 - CK0250



* maximum ø

Model	Capacity	Oil Cap.	Weight	A	B	C	D	L	Chain*	Strength	Bar*	Strength
LARZEP	kN	cm ³	kg	mm	mm	mm	mm	mm	mm	by grades	mm	N/mm ²
CK0016	135	-	5,8	81,5	54	20	68	489	19	28 - 43	19	700
											15	1.000
									14	60 - 80	13	1.400
CK0116	135	38	4,8	81,5	54	19,5	68	290	19	28 - 43	19	700
											15	1.000
									14	60 - 80	13	1.400
CK0130	390	182	16,8	183	88	31,5	113	360	30	28 - 43	30	700
											25	1.000
									20	60 - 80	20	1.400
CK0216	135	38	8,4	126	54	19,5	81	343	19	28 - 43	19	700
											15	1.000
									14	60 - 80	13	1.400
CK0230	345	161	16,0	183	88	30	113	412	30	28 - 43	30	700
											25	1.000
									20	60 - 80	20	1.400
CK0250	1.120	842	68,0	228	120	52	207	475	50	28 - 43	50	700
											45	1.000
									40	60 - 80	40	1.400
										35	1.600	